



PPL Energy Efficiency Update
PPL Stakeholder Meeting
October 27, 2021
Virtual Format

Please Note:

- Audience is muted
- We will unmute for Q&A Session at end of webinar

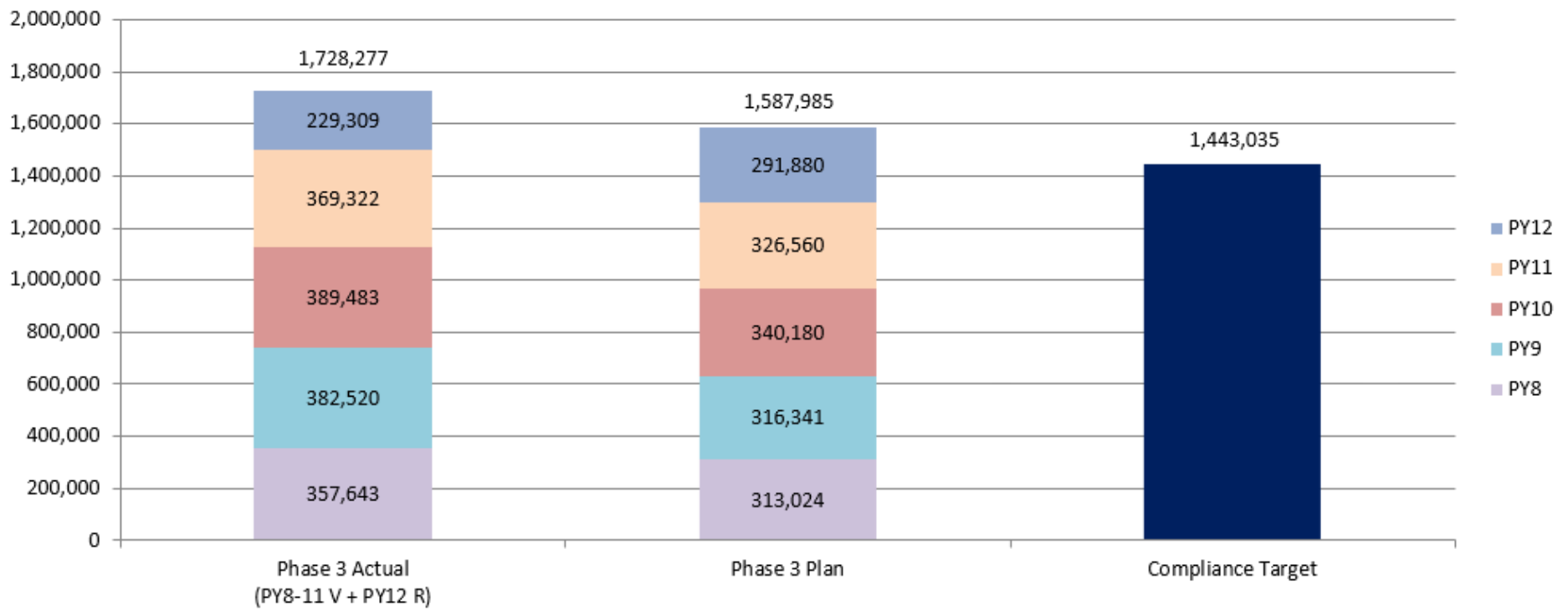
Agenda

- **Overview:** Dirk Chiles
- **Programs Update:** Chris Schoemaker
- **Settlement Update:** Dirk Chiles
- **Question and Comment Period:** All
- **Closing:** Dirk Chiles

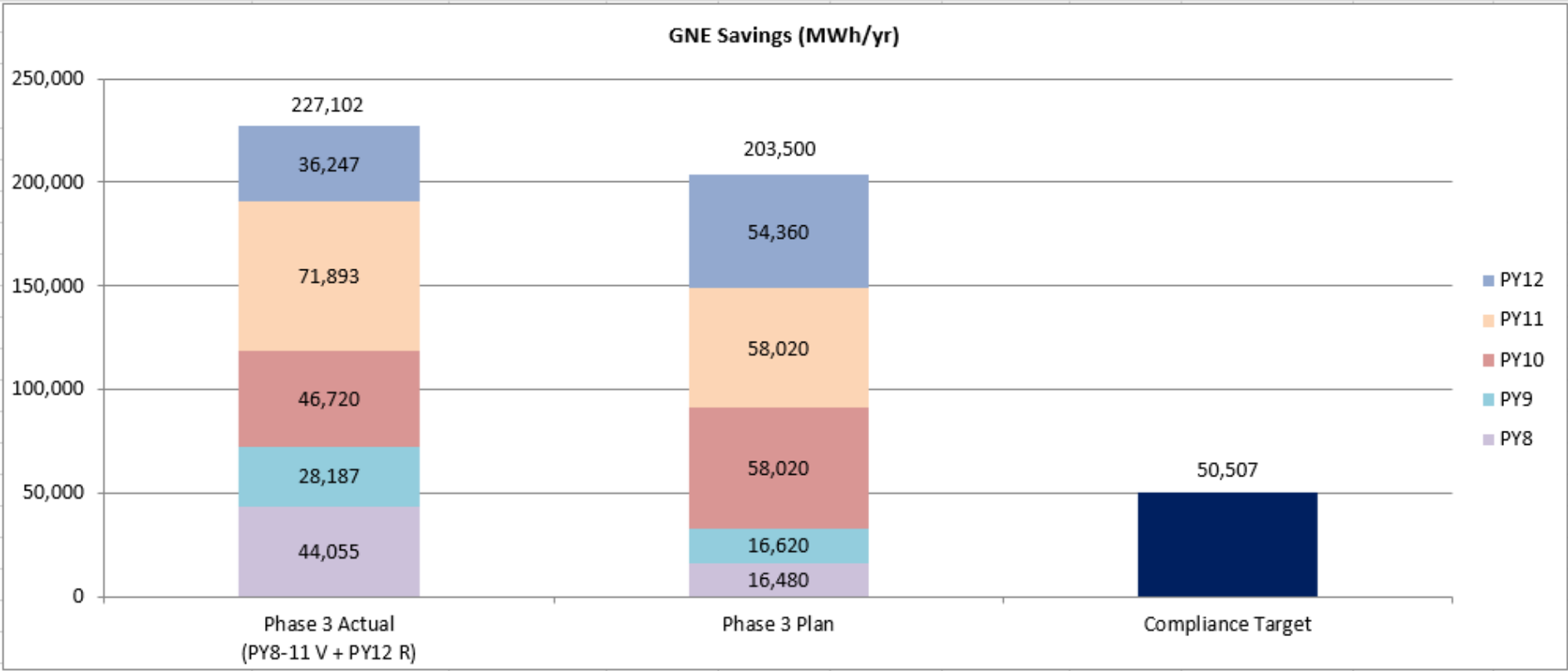
Overview: Portfolio Savings



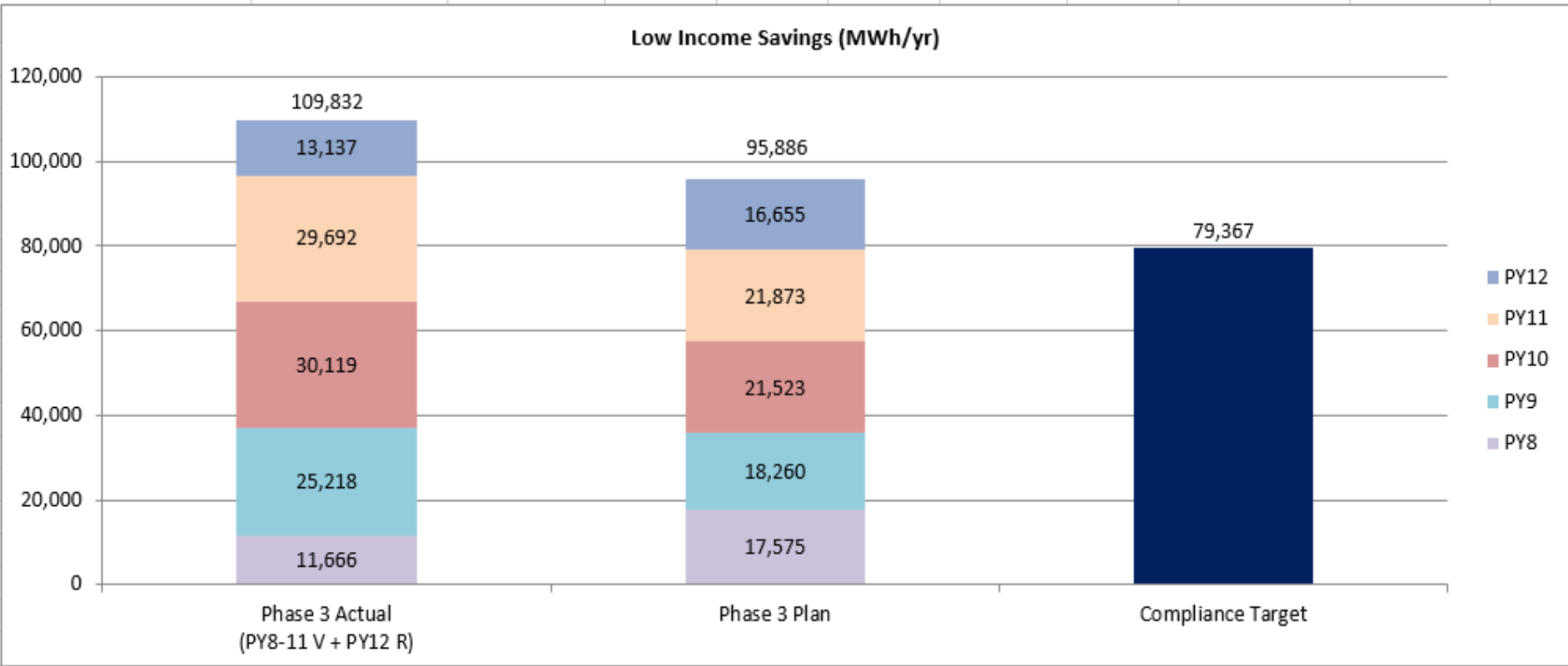
Portfolio Savings (MWh/yr)



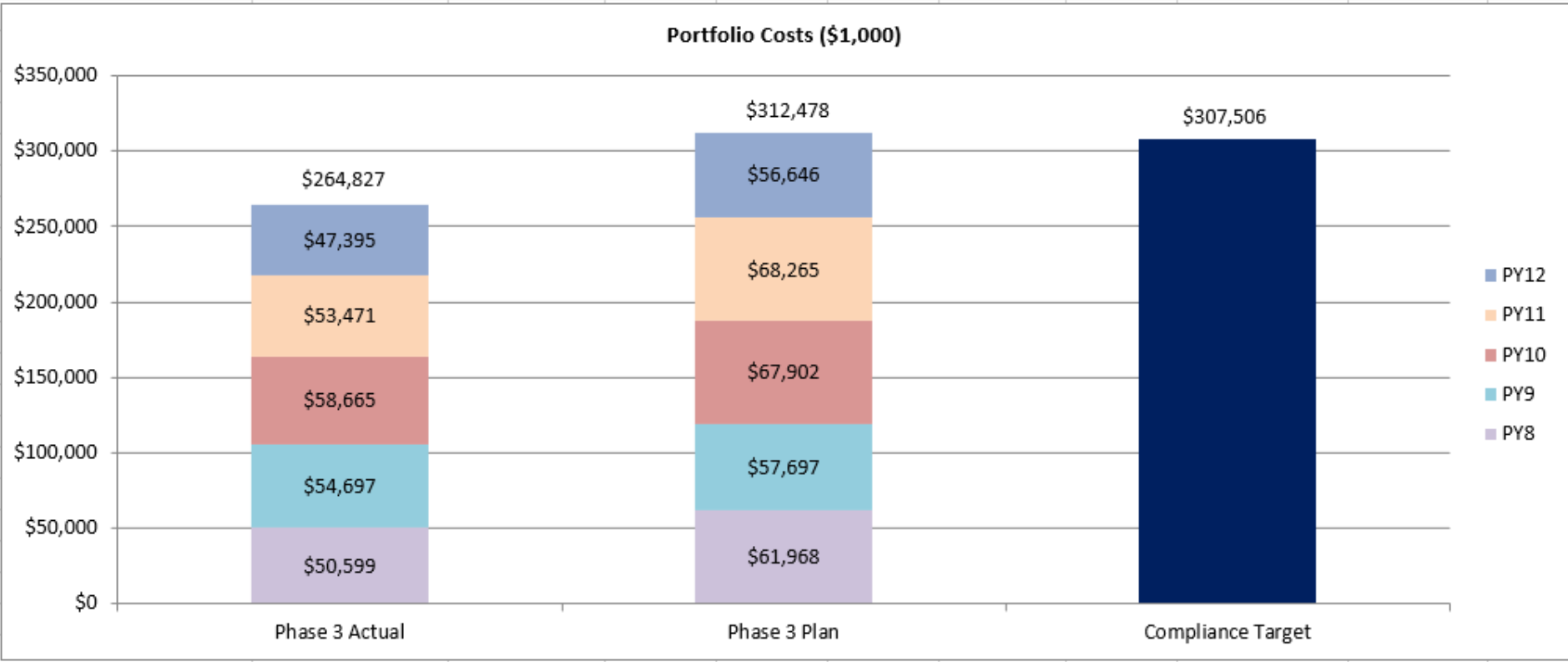
Overview: GNE Savings



Overview: Low Income Savings



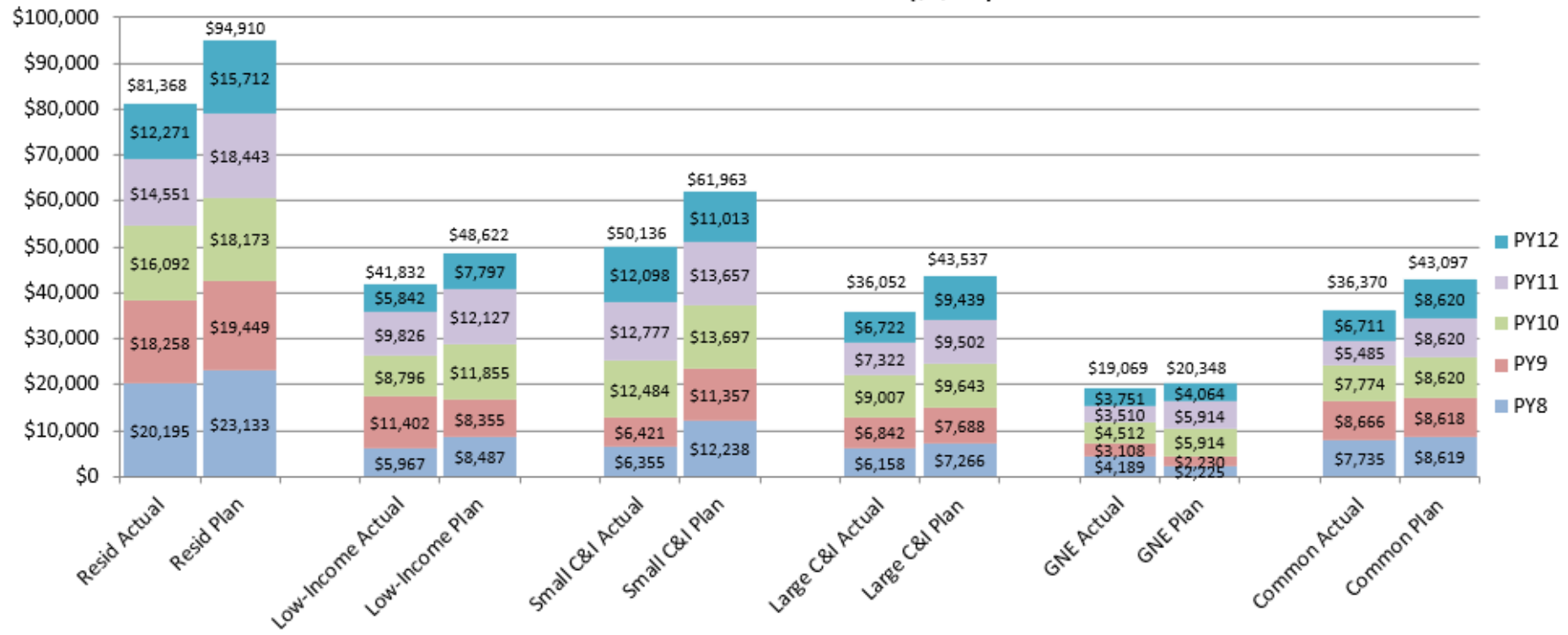
Overview: Portfolio Costs



Overview: Phase 3 Costs

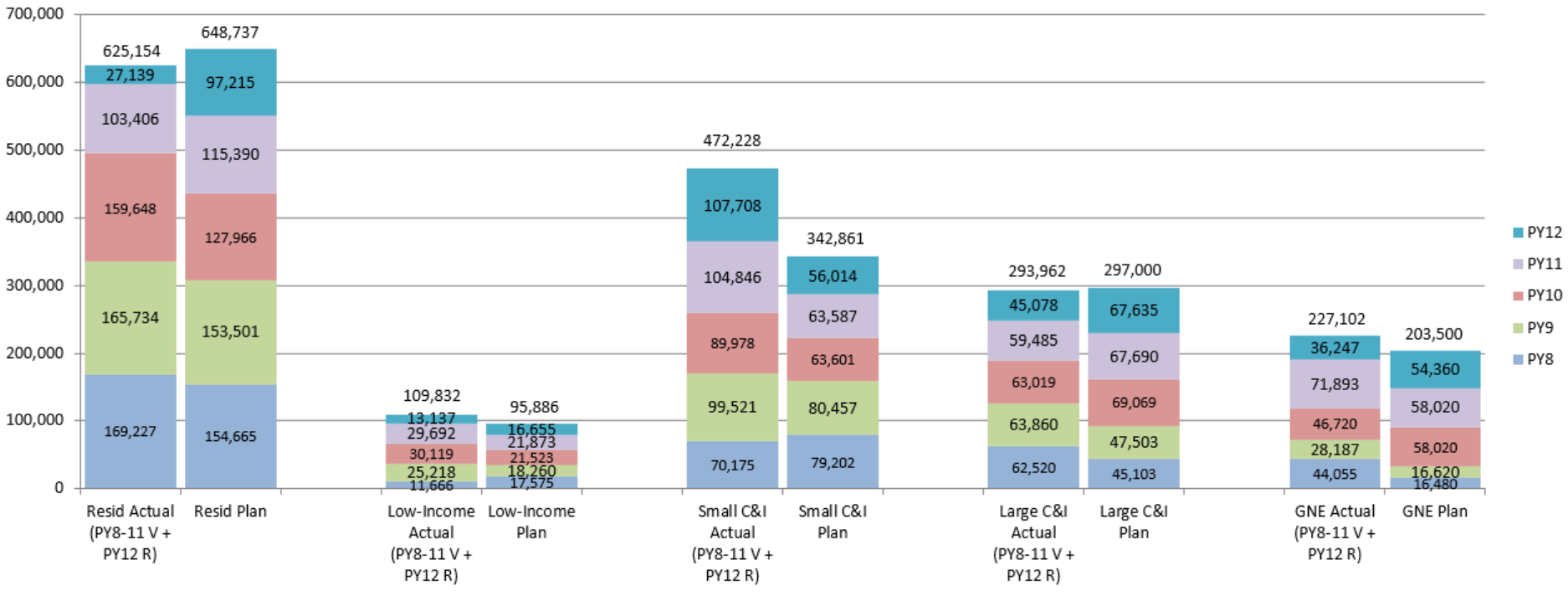


Phase 3 Customer Sector Costs (\$1,000)

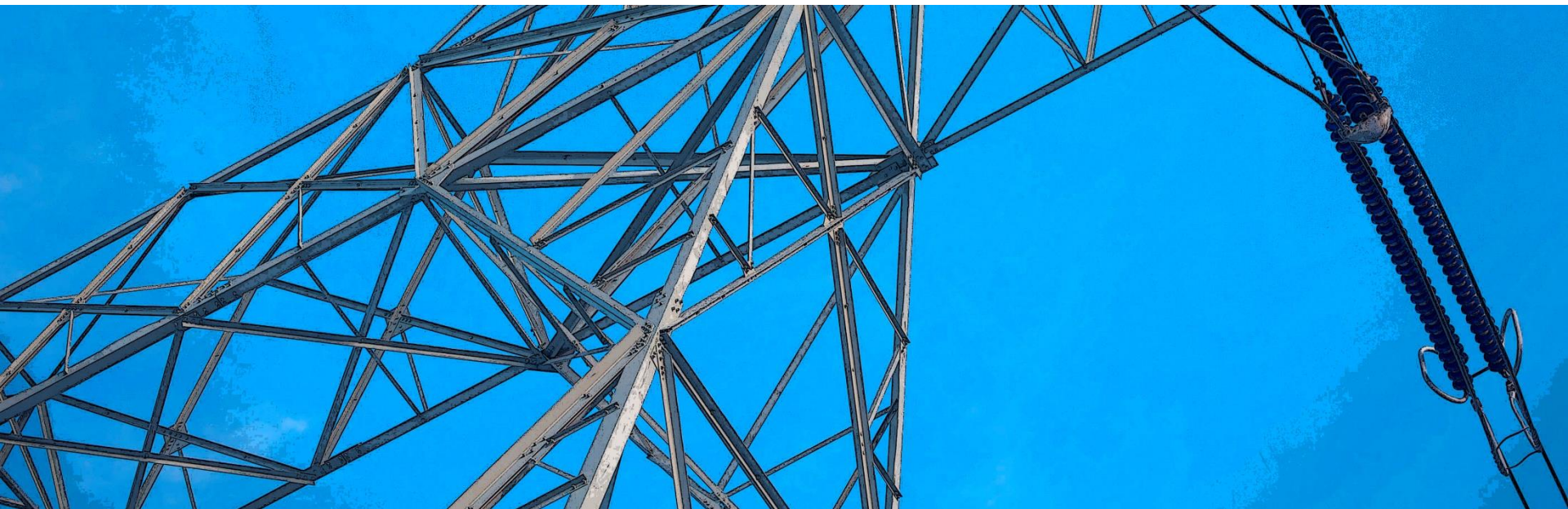


Overview: Phase 3 Sector Savings

Phase 3 Customer Sector Savings (MWh/yr)



Residential Programs



Residential Programs: New Homes

PY12

- 1,491 homes
- 4,282 MWh/yr. in savings
- \$1.2 million in incentives

Key Successes

- 5,050 homes PTD
- 3,000 kWh/yr. per home
- Up to \$2,500 incentives per home

Residential Program: New Homes

2021 ENERGY STAR® RESIDENTIAL NEW
CONSTRUCTION MARKET LEADER AWARD

The simple
choice for
energy
efficiency.



The U.S. Environmental Protection Agency recognizes

PPL

for its outstanding commitment to energy-efficient new homes
and for contributing

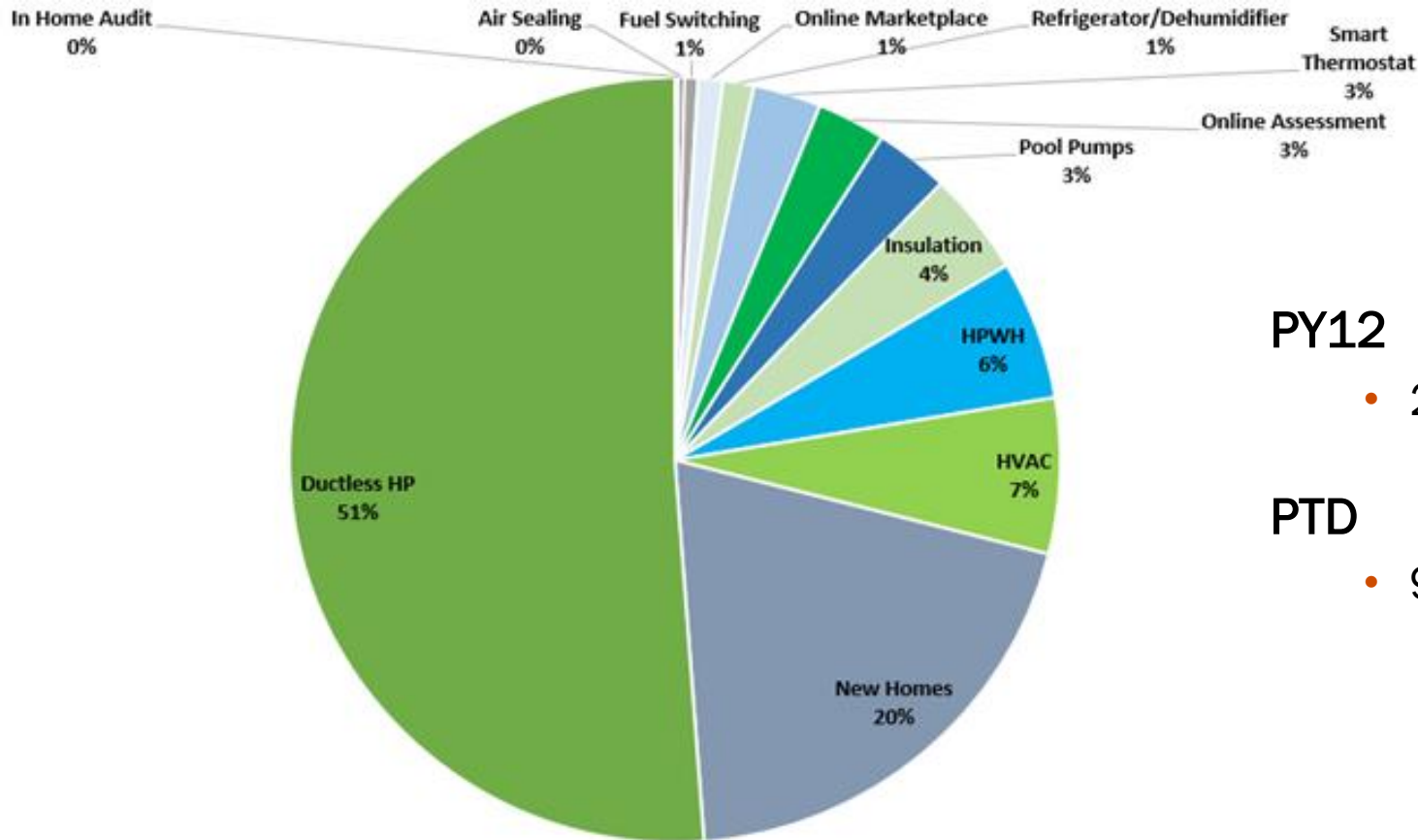
283

ENERGY STAR certified homes in 2020



Residential Program: Energy Efficient Homes

PY12 Savings by Measure Category



PY12

- 22,967 MWh/yr.

PTD

- 90,460 MWh/yr.

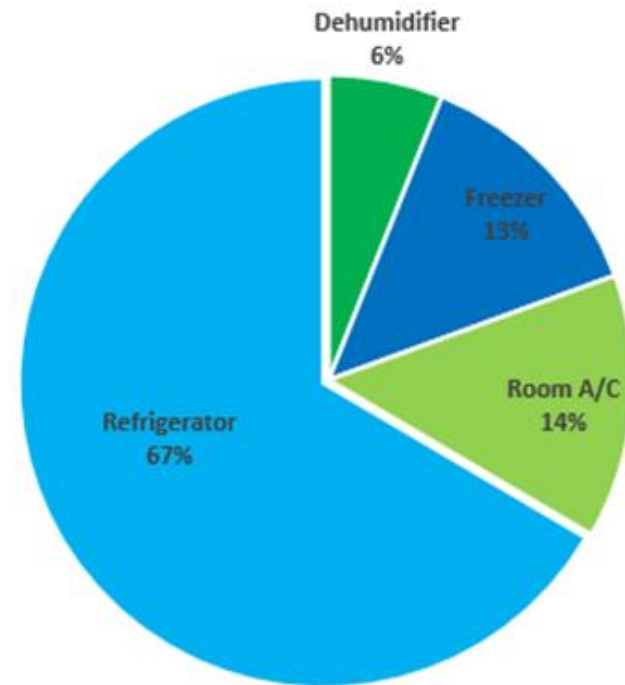
Residential Program: Energy Star Partner of the Year



Residential Program: Appliance Recycling

PY12 Units Collected

Appliance	PY12	PTD
Refrigerators	3,590	36,908
Freezers	722	9,028
Room A/C	756	7,627
Dehumidifiers	327	3,379



**Units collected in PY12*

PY12 MWh/yr.	PTD MWh/yr.
4,332	48,215

Residential Program: Appliance Recycling



Residential Program: Student Energy Education

Program	Grade Level
Bright Kids	2 nd – 3 rd
Take Action	5 th – 7 th
Innovation	9 th – 12 th

PY12

- 22,911 kits
- Focus on low-income schools
- Poster contest (K-8th)
- Innovation Challenge

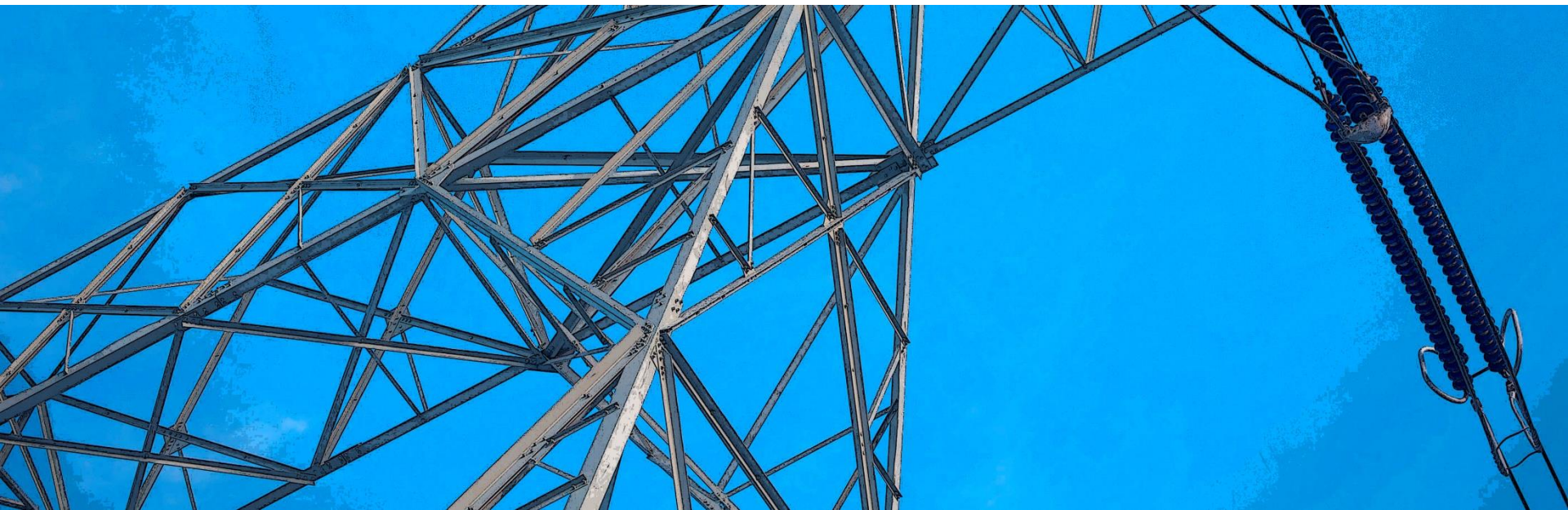


Residential Program: Home Energy Education

PY12 MWh/yr.	PTD MWh/yr.
14,784	166,958

- 14,944 low-income participants
- Customer fatigue = lower CSAT

Low Income Programs



Low Income Program: WRAP PY12

Goal	Achieved
6,800	Almost 5,400

- **Created virtual process following shutdowns that launched in late June 2020**
- **Increased leads**
 - Quick Track
 - Marketing mix
- **Benefits**
 - Budget on track
 - High CSAT (97%)

Low Income Program: Multifamily & MMMF

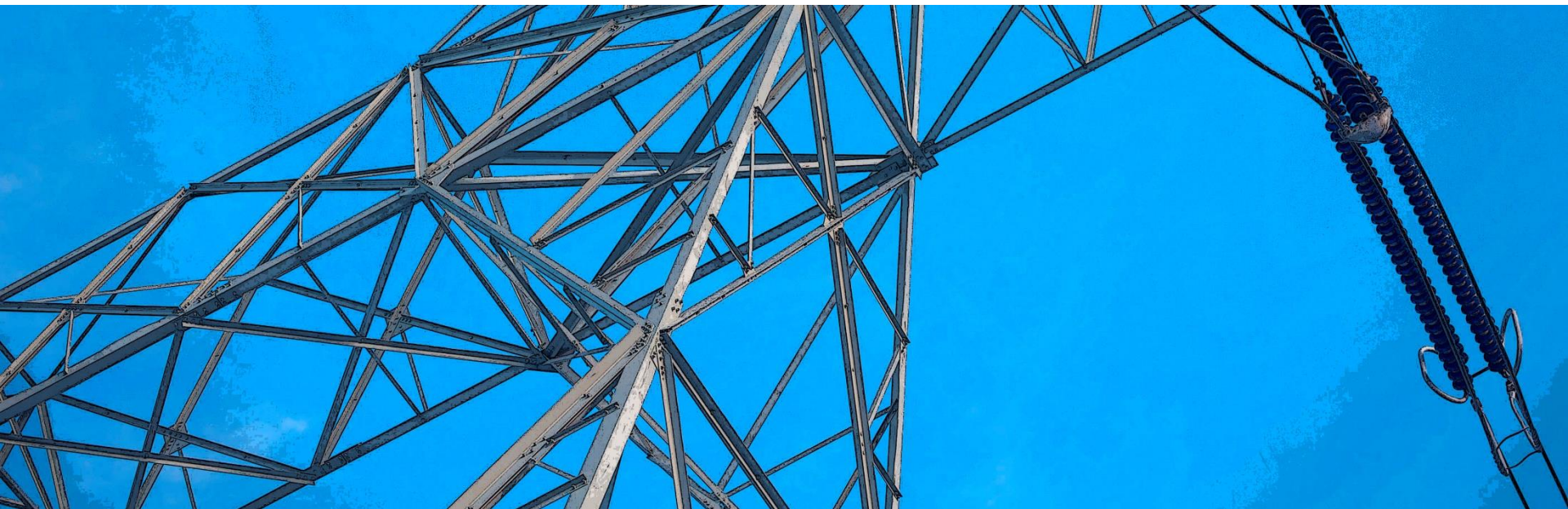
- **Individually-metered multifamily (IMMF)**
 - PTD = 17,000 customers
 - More than 2,000 virtually
 - Phase 2 = 1,400 customers
- **Master-metered multifamily (MMMF) PTD**
 - 96 facilities
 - 4,900 units
 - Mostly GNE (75/25 split)
 - Challenges continue

Low Income Program: Low Income Kits & Education PY11

Goal	Achieved
8,000	15,500

- Increased kits in PY9
- Closed program 12/2019
- High CSAT (98%)

Non-Residential Programs

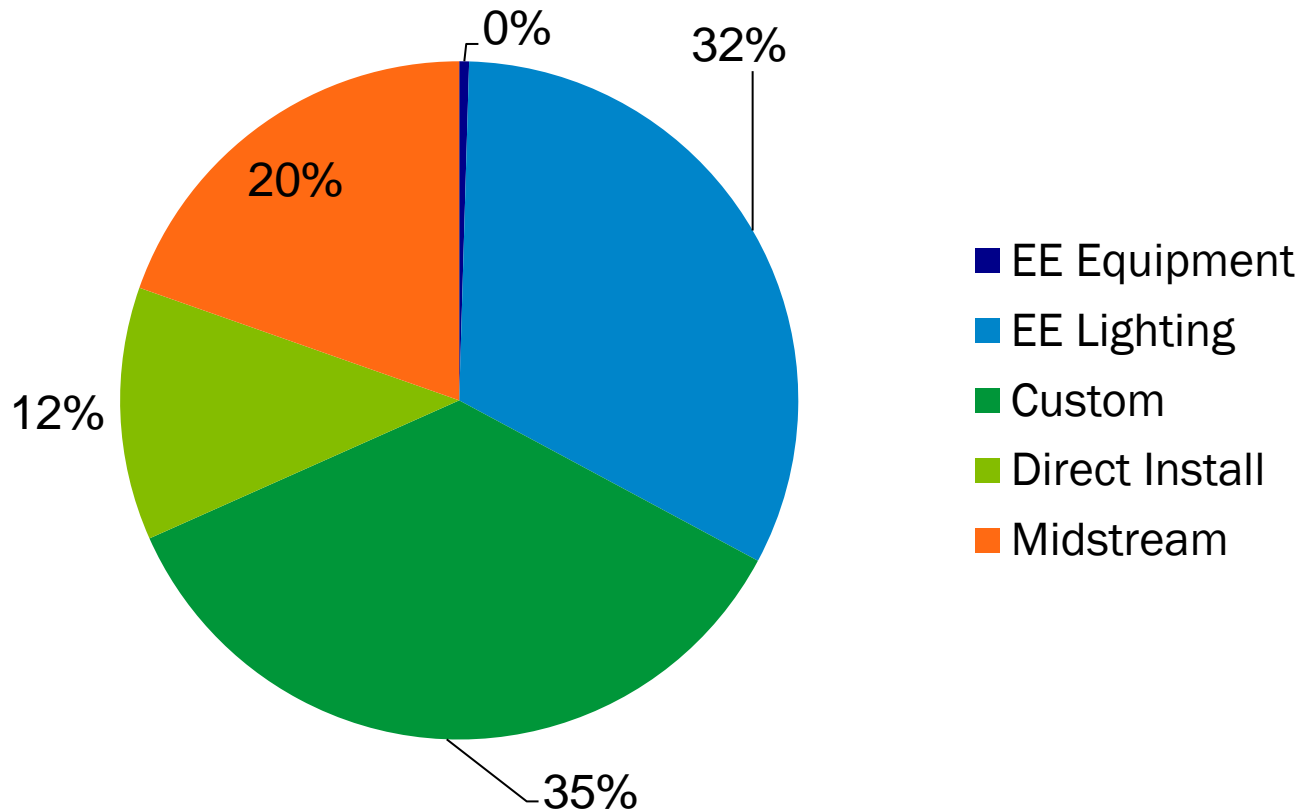


Non-Residential Programs

- **PY12 Program achievements**
 - 194,768 MWh/yr.
 - 37,057 MWh/yr. (GNE Sector)
 - \$12,783,485 incentives
 - 8,236 total projects
 - 7,503 midstream projects
 - High CSAT (91%)

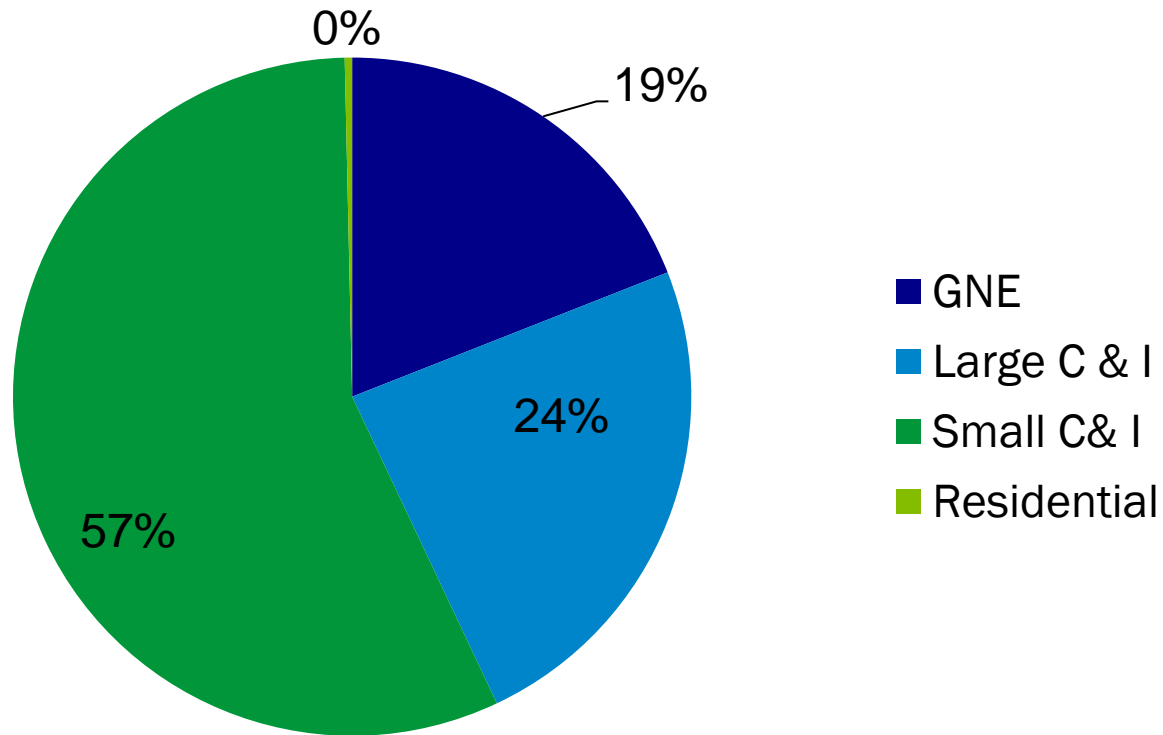
Non-Residential Programs

Energy Savings by Application for PY12



Non-Residential Programs

Energy Savings by Sector for PY12



Non-Residential: Efficient Equipment

PY12 verified savings by project type:

- Lighting
 - 565 projects
 - 84,245 MWh/yr.
- Equipment
 - 51 projects
 - 3,195 MWh/yr.
- (Includes both prescriptive and direct install)

PY12 Incentives
\$3,537,463

PTD verified savings:

- 495,629 MWh/yr.

Non-Residential: Direct Install

PY12 verified savings for Direct Install:

- 23,494 MWh/yr.
- Roughly 27% of efficient equipment savings
 - Lighting verified savings 21,188 MWh/yr.
 - Refrigeration verified savings 2,285 MWh/yr.
 - Custom verified savings 21 MWh/yr.

PTD verified savings:

- 92,481 MWh/yr.

PY12 Incentives
\$3,225,546

Non-Residential: Midstream

PY12 verified savings for Midstream:

- 7,503 projects
- 38,196 MWh/yr.
- 23 distributors, 80+ locations

PTD verified savings:

- 108,127 MWh/yr.

PY12 Incentives
\$2,400,335

Non-Residential: Custom



PY12 verified savings for Custom:

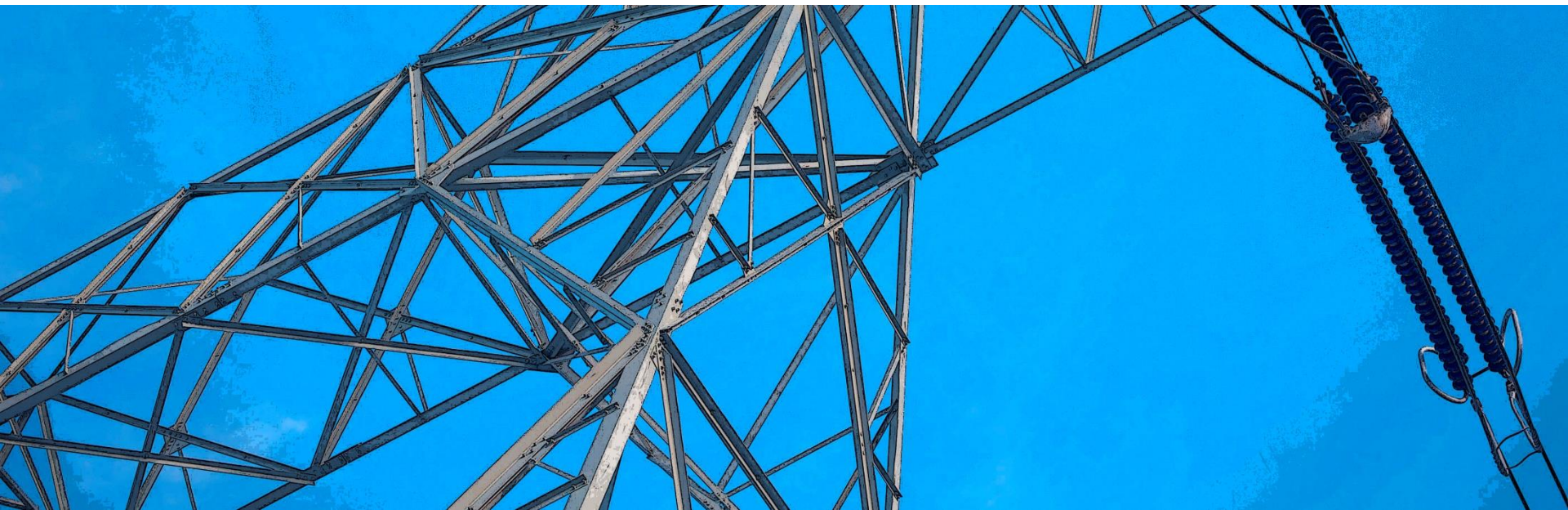
- 116 projects
- 69,132 MWh/yr.
(Included 1 CHP projects)

PY12 Incentives
\$3,620,141

PTD verified savings:

- 310,705 MWh/yr.

Demand Response Program



Demand Response Program

- **Demand Response PY12 season**
 - PUC approved making PY12 Voluntary for EDCs
 - 96.9 MW avg (108.4 MW PTD)
 - 5 events called
 - Event 1 – 109.6 MW avg.
 - Event 2 – 102.4 MW avg.
 - Event 3 – 76.5 MW avg.
 - Event 4 – 91.3 MW avg.
 - Event 5 – 104.7 MW avg.



Pilot Update

- Deep Energy Retrofit Pilot
- Net Zero Building Pilot

Contacts

- Dirk Chiles
dschiles@pplweb.com; 484-634-3005
- Chris Schoemaker
crschoemaker@pplweb.com; 484-634-3060
- Heather Bash (non-residential)
hmsmeltz@pplweb.com; 484-634-3218
- Mary Ann Kelly-Merenda (residential)
makelly-merenda@pplweb.com; 484-634-3034
- Sean Pressmann (low income & demand response)
sdpressmann@pplweb.com; 484-634-3047

Questions? Comments?

Thank you for participating

