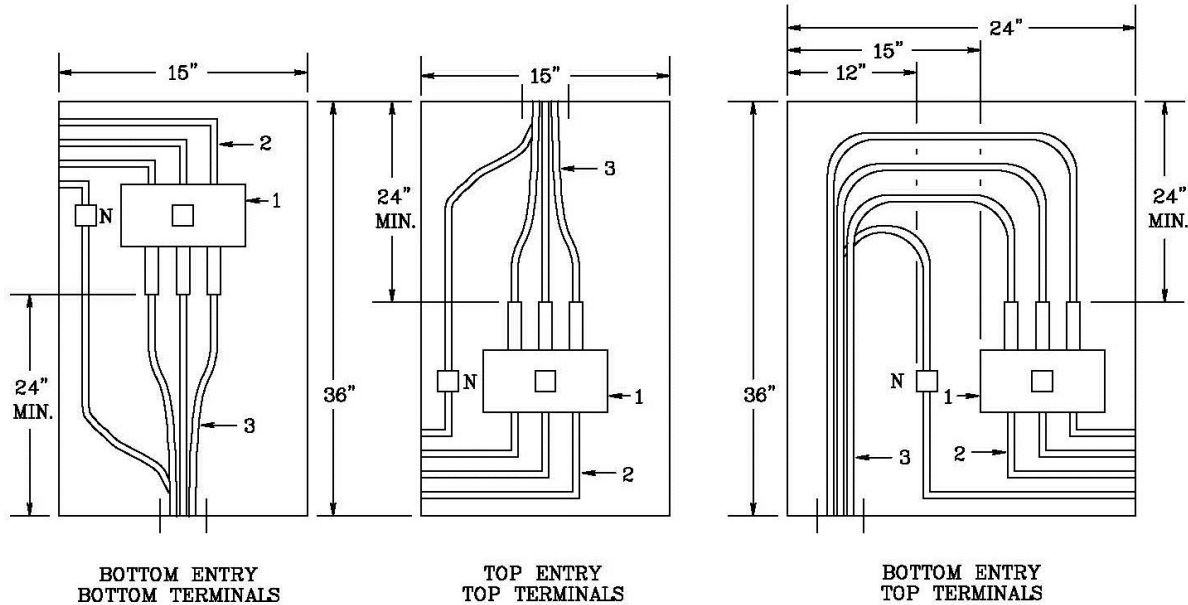


Sketch #54a Termination cabinet, all service entries, single phase or three phase, 120/208 volts or 120/240 volts or 277/480V, 1 cable set



- 1 - CUSTOMER MAIN DISCONNECT OR TERMINAL BLOCK - SUITABLE FOR 750 KCMIL CABLE
- 2 - CUSTOMER BUS OR CABLES SHALL NOT INTERFERE WITH PPL CABLES & MUST MEET MINIMUM BENDING RADIUS REQUIREMENTS AS DESCRIBED IN NEC ARTICLE 300 - WIRING METHODS.
- 3 - PPL SERVICE CABLES

NOTES:

A. TERMINATION CABINETS SHALL:

- BE CONSTRUCTED OF GALVANNEALED STEEL OR EQUIVALENT - MINIMUM #16 GAUGE STEEL.
- HAVE A HASP WHICH WILL ACCOMMODATE AT LEAST 1/4 INCH DIAMETER LOCK.
- BE WEATHER RESISTANT, RAIN-TIGHT, AND TAMPER-PROOF IF INSTALLED OUTDOORS.
- HAVE SETSCREW TYPE TERMINALS ACCEPTING UP TO 750 KCMIL CABLE. IF COMPRESSION TYPE CABLE-TO-FLAT CONNECTORS SUPPLIED, THE LUGS FOR PPL MUST SHOW THE BURNDY DIE INDEX. TERMINAL CLEARANCE: MINIMUM PHASE-TO-PHASE - 2 INCHES. MINIMUM PHASE-TO-GROUND - 1 INCH. MINIMUM PHASE-TO-CABINET - 1.5 INCHES.

- B. WIRES TO PPL TERMINALS AND WIRES TO CUSTOMER'S TERMINALS SHALL NOT INTERFERE WITH PPL CABLES & MUST MEET MINIMUM BENDING RADIUS REQUIREMENTS AS DESCRIBED IN NEC ARTICLE 300 - WIRING METHODS.
- C. STRAIGHT IN ENTRY TO TERMINALS IS PREFERRED METHOD OF SERVICE.
- D. THESE DIMENSIONS ALSO APPLY TO DISCONNECTS SUPPLIED WITH MULTI-GANG METERING MODULES.

<p>RULES FOR ELECTRIC METER AND SERVICE INSTALLATIONS PPL ELECTRIC UTILITIES CORPORATION</p>	<p>Rules: 2, 5, 6, 12, 13, 15, 16, 21 Date: 7/18/16 Engr: NAP</p>
--	---

REMSL_S054A.dwg