

Secondary Service Multi-Meter Installation for
Underground Service Lateral Attachment
for Mobile Home Court

SKETCH #43

SHEET 43

SKETCH #43

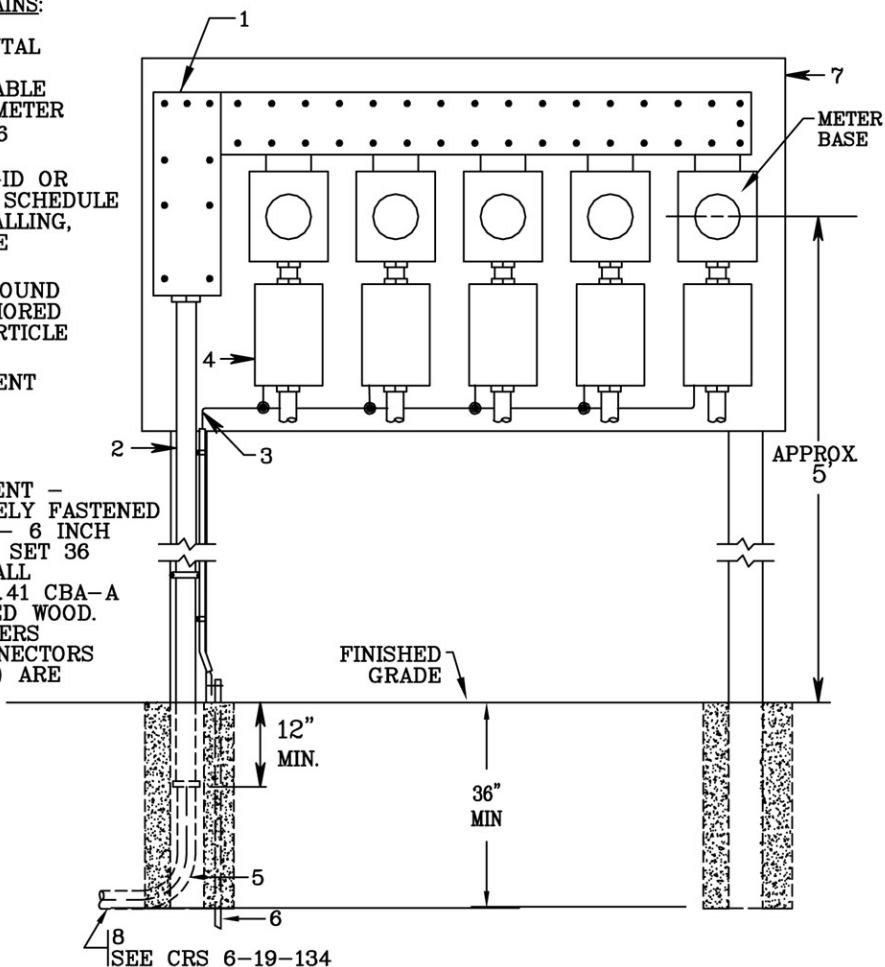
SHEET 43

CUSTOMER FURNISHES, INSTALLS, MAINTAINS:

- 1 - SERVICE ENTRANCE AND HORIZONTAL METER BASE (SKETCH #26) OR HORIZONTAL AND VERTICAL SEALABLE WIRE TROUGHS AND INDIVIDUAL METER BASES (SKETCH #27) FOR 2 TO 6 METERS. SEE TABLE 5 OR 11.
- 2 - MINIMUM 3 INCH GALVANIZED RIGID OR INTERMEDIATE STEEL, OR GRAY SCHEDULE 40 PVC CONDUIT. BEFORE INSTALLING, CONTACT PPL TO DETERMINE SIZE REQUIRED.
- 3 - SERVICE GROUND - PROTECT GROUND WIRE WITH MOLDING OR USE ARMORED GROUND CABLE SIZE PER NEC ARTICLE 250 - GROUNDING.
- 4 - SERVICE DISCONNECTING EQUIPMENT (SEE NOTES 1 & 4 BELOW).
- 5 - 36" RADIUS SWEEP, 90° ELBOW
- 6 - GROUND ROD
- 7 - MOUNTING FOR SERVICE EQUIPMENT - 2 INCH NOMINAL LUMBER SECURELY FASTENED TO SUPPORTS CONSISTING OF 2 - 6 INCH BY 6 INCH BY 10 FOOT TIMBERS SET 36 INCHES MINIMUM IN CONCRETE. ALL LUMBER TO BE COPPER AZOLE 0.41 CBA-A OR 0.21 CA-B PRESSURE TREATED WOOD. HOT DIPPED GALVANIZED FASTENERS (MEETING ASTM A 153) AND CONNECTORS (ASTM A 653 CLASS G185 SHEET) ARE REQUIRED.

PPL FURNISHES, INSTALLS, MAINTAINS:

- 8 - SERVICE LATERAL AND MAKES CONNECTION BETWEEN THE SERVICE LATERAL CABLES AND LINE SIDE TERMINALS OF THE COMMON BUS IN CUSTOMER'S HORIZONTAL METER BASE OR THE SERVICE CONDUCTORS IN CUSTOMER'S VERTICAL WIRE TROUGH.



NOTES (NOT SHOWN):

1. SERVICE EQUIPMENT MAY ALSO BE MOUNTED ON THE BACK OF THE TREATED WOOD OPPOSITE THE WIRE TROUGH.
2. IN HORIZONTAL WIRE TROUGHS, ALL CONNECTIONS FROM THE COMMON BUS IN THE WIRE TROUGH TO METER BASES ARE THE RESPONSIBILITY OF THE CUSTOMER.
3. IN WIRE TROUGH INSTALLATIONS, CUSTOMER MAKES ALL TAPS TO INDIVIDUAL METER BASES FROM CUSTOMER'S BUS.

4. WHEN THE EXTERIOR WALL OF THE MOBILE HOME IS NOT IN SIGHT FROM AND/OR MORE THAN 30 FEET FROM THE SERVICE DISCONNECTING EQUIPMENT SHOWN IN THE SKETCHES, THE INSTALLATION OF A SECOND CIRCUIT BREAKER OR SWITCH AND FUSES IN SERIES WITH THE SERVICE DISCONNECTING EQUIPMENT IS ACCEPTABLE. IF A POST IS USED TO MOUNT THE SECOND DISCONNECT, USE A 4 INCH BY 4 INCH CROSS SECTION COPPER AZOLE 0.41 CBA-A OR 0.21 CA-B PRESSURE TREATED WOOD. HOT DIPPED GALVANIZED FASTENERS (MEETING ASTM A 153) AND CONNECTORS (ASTM A 653 CLASS G185 SHEET) ARE REQUIRED - SET 36 INCHES MINIMUM IN GROUND. THE SECOND DISCONNECT IS THE MOBILE HOME SERVICE EQUIPMENT. INSTALL THREE-WIRE UNDERGROUND CABLE BETWEEN THE TWO DISCONNECTS AND FOUR-WIRE FEEDER CABLE BETWEEN THE SECOND DISCONNECT AND THE MOBILE HOME. INSTALL GROUNDS AT BOTH DISCONNECTS.

5. CUSTOMER EXCAVATES, BACKFILLS AND RESTORES SURFACE OF TRENCH.

REFERENCE: CRS 6-19-134

RULES FOR ELECTRIC METER AND SERVICE INSTALLATIONS

PPL ELECTRIC UTILITIES CORPORATION

Rules: 5, 6, 16, 27

REMSI_S043.dwg

Date: 7/28/04 **Engr:** RPV