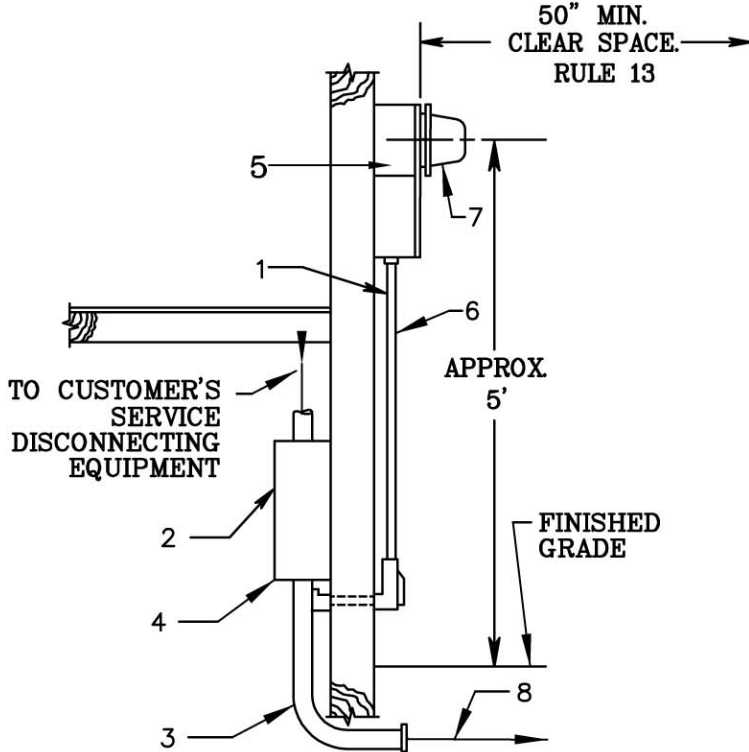


Arrangement of Equipment for Instrument Transformer
Metering, Services Over 600 AMPS



CUSTOMER FURNISHES. INSTALLS. MAINTAINS:

1. 1-1/4 INCH MINIMUM, THREADED, GALVANIZED, RIGID OR INTERMEDIATE STEEL OR GREY SCHEDULE 40 PVC CONDUIT AND FITTINGS BETWEEN INSTRUMENT TRANSFORMER CABINET AND METER PANEL.
2. SEALABLE METAL INSTRUMENT TRANSFORMER CABINET, MINIMUM SIZE 48 INCHES BY 48 INCHES BY 12 INCHES. SEE RULE 15 AND SEE TABLE 1. APPROVED INSTRUMENT TRANSFORMER CABINET. SEE TABLE 2 IF OUTDOORS.
3. 36 INCH MINIMUM RADIUS, GALVANIZED, STEEL ELBOW THROUGH BASEMENT WALL.

PPL EU FURNISHES. MAINTAINS: CUSTOMER INSTALLS:

4. INSTRUMENT TRANSFORMERS AND MOUNTING.
5. METER PANEL INSTALLED AT LOCATION DESIGNATED BY PPL EU.

PPL EU FURNISHES. INSTALLS. MAINTAINS:

6. WIRING BETWEEN INSTRUMENT TRANSFORMERS AND METER PANEL.
7. METER.
8. SERVICE LATERAL CABLES TERMINATING ON THE LINE SIDE OF THE INSTRUMENT TRANSFORMERS.

NOTES:

- A. INDOOR LOCATION NEEDS APPROVAL OF SUPERVISOR METER SERVICES.
- B. 50" MINIMUM CLEAR SPACE IN FRONT OF METERBASE. SEE RULE 13. SKETCH 55 AND SKETCH 55A.

*REFERENCE CRS 6-19-133 & CRS 6-19-134, SKETCH 8C, SKETCH 55 & SKETCH 55A

<p>RULES FOR ELECTRIC METER AND SERVICE INSTALLATIONS PPL ELECTRIC UTILITIES CORPORATION</p>	<p>Rules: 5, 6, 10, 11B, 12, 13, 15 REMSL_S017.dwg Date: <u>8/17/07</u> Engr: <u>MDB</u></p>
---	--