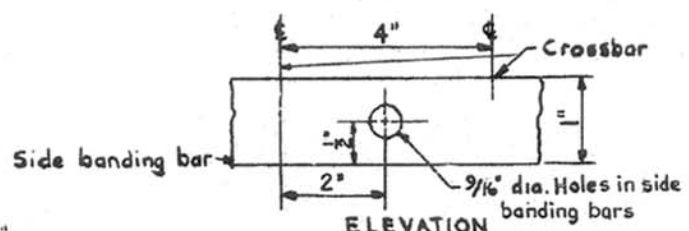


DETAIL X



ELEVATION
 DETAIL Y

NOTES:

1. Grating to be of pressure locked or welded construction and hot dip galvanized after complete fabrication steel and galvanizing to be in accordance with the latest revision of PP&L. Co. Spec. LA-110701. Approx. weight 5.7# per sq. ft.
2. Bearing bars of 1" x 1/8" size to be spaced 1 3/16". Crossbars to be installed every 4".
3. Banding bars of 1" x 1/8" steel to be installed at each end of grating. Middle bearing bar between holes and one bearing bar on each side of each hole, also side banding bars are to be welded to end banding bars. Holes in all banding bars to be 9/16" dia., punched or drilled before galvanizing, located as shown in Details A, B, C, & D.
4. If pressure locked construction is used, Note 3 must still be complied with.

SUPERSEDES LB-12617

GROUND STANDARD
 GROUNDED PLATFORMS
 DESCRIPTION & DIMENSIONS

SCALE - NONE
 APPROVED *[Signature]* JANUARY 4, 1956
 STATION ELECTRICAL ENGINEER
 PENNSYLVANIA POWER & LIGHT COMPANY
 ALLENTOWN, PA.

LB-12669-4