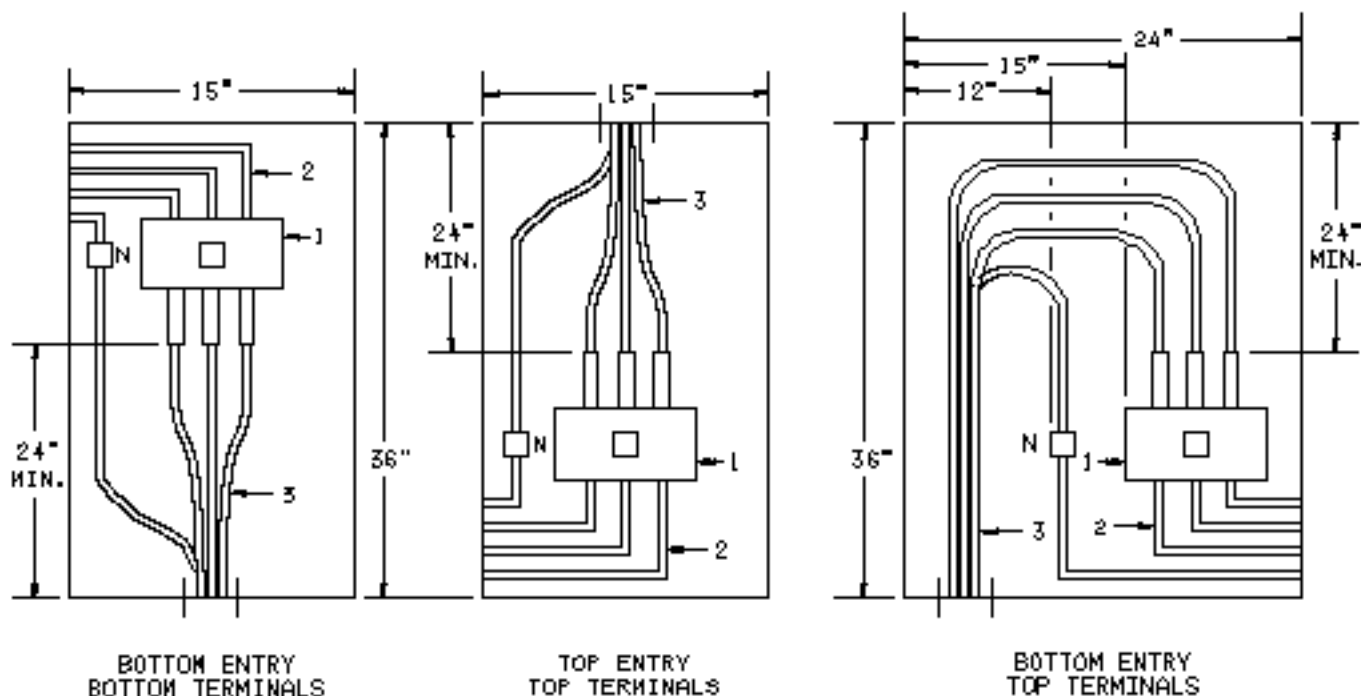


PENNSYLVANIA POWER & LIGHT COMPANY

TERMINATION CABINET-ALL SERVICE ENTRIES
 SINGLE PHASE OR THREE PHASE
 120/208V OR 120/240V
 1 CABLE SET
 RULES 2, 5, 6, 12, 13, 15, 16, 21



- 1 - CUSTOMER MAIN DISCONNECT OR TERMINAL BLOCK - SUITABLE FOR 750 KCMIL CABLE
- 2 - CUSTOMER BUS OR CABLES - SHALL NOT INTERFERE WITH PP&L CABLES
- 3 - PP&L SERVICE CABLES

NOTES.

- 1 - TERMINATION CABINETS SHALL:
 - A - BE CONSTRUCTED OF GALVANNEALED STEEL OR EQUIVALENT - MINIMUM #16 GAUGE STEEL.
 - B - HAVE A HASP WHICH WILL ACCOMMODATE AT LEAST 1/4 INCH DIAMETER LOCK.
 - C - BE WEATHER RESISTANT, RAIN TIGHT AND TAMPER PROOF IF INSTALLED OUTDOORS
 - D - HAVE SETSCREW TYPE TERMINALS ACCEPTING UP TO 750 KCMIL CABLE IF COMPRESSION TYPE CABLE-TO-FLAT CONNECTORS SUPPLIED, THE LUGS FOR PP&L MUST SHOW THE BURNDY DIE INDEX. TERMINAL CLEARANCES - MINIMUM PHASE-TO-PHASE- 2 INCHES. MINIMUM PHASE-TO-GROUND - 1 INCH.
- 2 - WIRES TO PP&L TERMINALS AND WIRES TO CUSTOMER'S TERMINALS SHALL NOT INTERMINGLE. PP&L CABLES AND TERMINALS MUST REMAIN ACCESSIBLE TO FACILITATE REPLACEMENT OF FAILED CABLES
- 3 - STRAIGHT IN ENTRY TO TERMINALS IS PREFERRED METHOD OF SERVICE
- 4 - THESE DIMENSIONS ALSO APPLY TO DISCONNECTS SUPPLIED WITH MULTI-GANG METERING MODULES.

SKETCH # 54A

RULES FOR ELECTRIC METER AND SERVICE INSTALLATIONS
 PA POWER & LIGHT CO. ALLENTOWN, PA.

REVISION DATE: 3-1-94

A-191000⁻¹ SHEET 54A