

PENNSYLVANIA POWER & LIGHT COMPANY

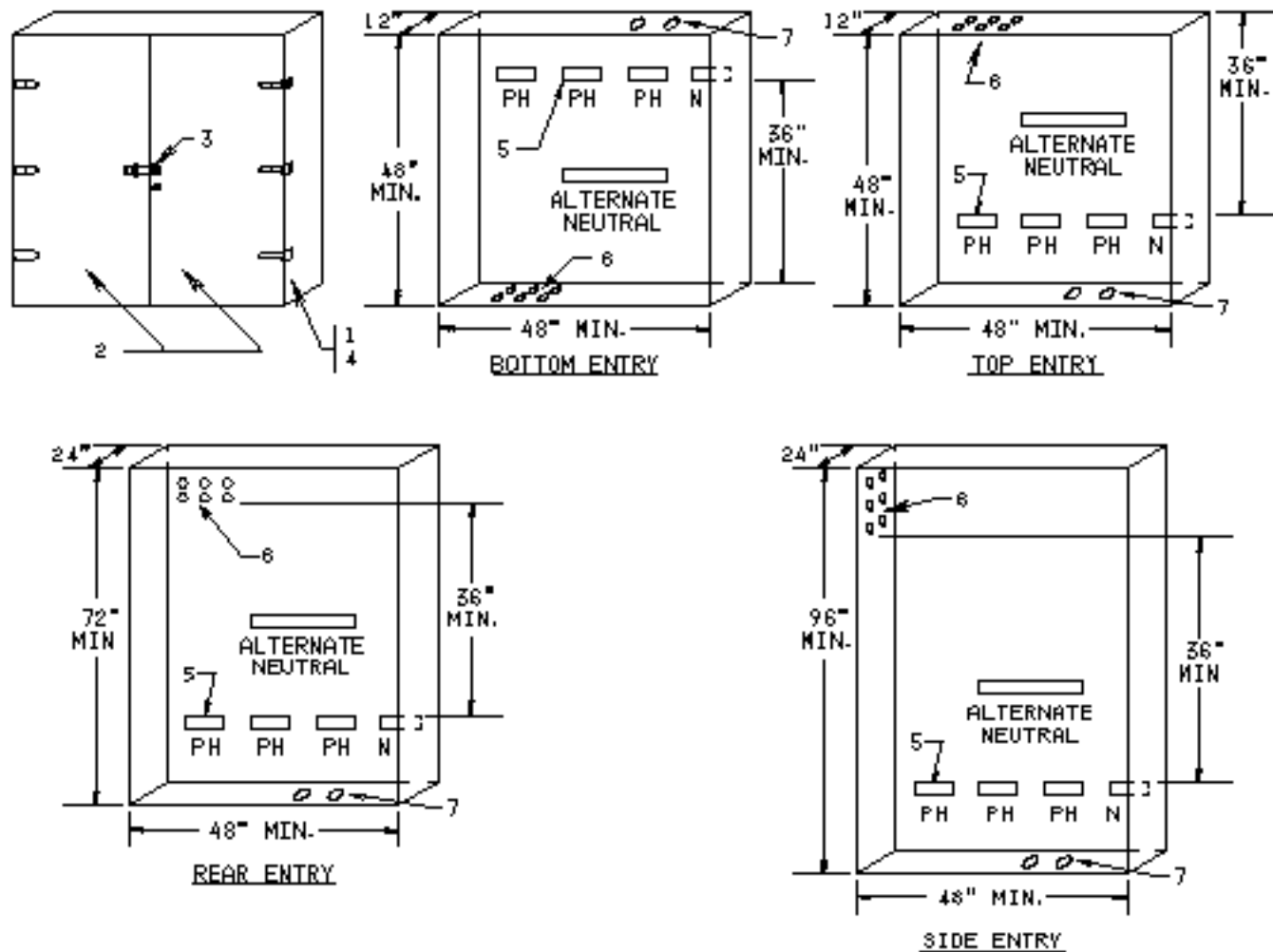
TERMINATION CABINET-ALL SERVICE ENTRIES

SINGLE PHASE OR THREE PHASE

120/208V OR 120/240V

2 TO 6 SETS OF CABLE

RULES 2, 5, 6, 12, 13, 15, 16, 21



TERMINATION CABINETS SHALL:

- 1 - BE CONSTRUCTED OF GALVANNEALED STEEL OR EQUIVALENT-MINIMUM #16 GAUGE STEEL
- 2 - HAVE TWO, HINGED DOORS WITH WIND LOCKS
- 3 - HAVE A HASP WHICH WILL ACCOMMODATE AT LEAST 1/4 INCH DIAMETER LOCK.
- 4 - BE WEATHER RESISTANT, RAIN TIGHT AND TAMPER PROOF IF INSTALLED OUTDOORS.
- 5 - HAVE SETSCREW TYPE TERMINALS ACCEPTING UP TO 750 KCMIL CABLE. NUMBER OF TERMINALS PER PHASE AVAILABLE TO PP&L SHALL EQUAL NUMBER OF SERVICE CONDUITS (INCLUDING ANY SPARES) IF COMPRESSION TYPE CABLE-TO-FLAT CONNECTORS SUPPLIED, THE LUGS FOR PP&L MUST SHOW THE BURNODY DIE INDEX. TERMINAL CLEARANCES - MINIMUM PHASE-TO-PHASE- 2 INCHES, MINIMUM PHASE-TO-GROUND- 1 INCH.
- 6 - GROUP SERVICE CONDUITS FOR PP&L SERVICE CABLES. MAXIMUM CONDUIT DIAMETER - 4 INCHES.
- 7 - HAVE ADEQUATE CONDUITS FOR CUSTOMER'S CABLES TO DISCONNECT

NOTE. WIRES TO PP&L TERMINALS AND WIRES TO CUSTOMER'S TERMINALS SHALL NOT INTERMINGLE. PP&L CABLES AND TERMINALS MUST REMAIN ACCESSIBLE TO FACILITATE REPLACEMENT OF FAILED CABLES.

SKETCH # 54

RULES FOR ELECTRIC METER AND SERVICE INSTALLATIONS
PA POWER & LIGHT CO. ALLENTOWN, PA.

REVISION DATE: 3-1-94

A-191000⁻¹ SHEET 54