



YOUR ENERGY USE

See two years of usage history.

Download your data in minutes.

View on smartphone, tablet or computer.



PPL Electric Utilities

ANALYZE YOUR ENERGY USE

Our website helps customers understand and manage their electricity use.

Track daily and hourly electricity use data.

See how weather or behaviors affect overall electricity use.

AVAILABLE CHARTS INCLUDE:



Daily electricity use with temperature



Hourly electricity use

Data will show in 15-minute or 60-minute increments, depending on your meter



Monthly electricity use and demand in kilowatts

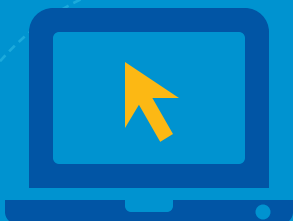


Electricity costs

The total cost of the electricity you used (not your actual bill amount). Includes your supplier's costs if you shop and receive one bill.



Usage summary



GET STARTED
TODAY AT

PPLELECTRIC.COM

DOWNLOAD YOUR USAGE HISTORY

Need historical usage information? Want your hourly data in a table? You can export two years of data into Microsoft Excel.

The screenshot shows the 'My Account' dashboard. On the left is a navigation menu under 'Account Management' with options like 'Account Summary', 'Daily Electricity Usage', 'Monthly Electricity Usage', 'Hourly Electricity Usage', 'My Electricity Costs', 'Usage Summary', 'Manage Account Information', 'PPL Alerts', 'Privacy Release', 'Select Account', and 'Customer News and Notices'. The main content area is titled 'Daily Electricity Usage' and includes a date range selector (From: 06/27/2016) and a bar chart showing usage and temperature. Below the chart is an 'Export up to 2 years of data to Excel' section with a date range selector (From: 06/27/2016 to To: 05/31/2016) and an 'Export' button. A note below the button says 'Download Green Button data to take advantage of smart services and applications to help you manage your electricity use.' At the bottom, there is an 'At a Glance' section with a table:

Usage	Avg. Temperature	Usage	Avg. Temperature
496 kWh	52°	612 kWh	54°

Below the table, it says 'There were 29 days in the billing cycle.'

On the daily or hourly graphs, you can pick a date range to export. The monthly chart, electricity costs and usage summary will automatically export the past 24 months.

This is a close-up of the 'Export up to 2 years of data to Excel' section. It shows the date range selector with 'From: 06/27/2016' and 'To: 05/31/2016', and a blue 'Export' button. Below the button, there is a note: 'Download Green Button data to take advantage of smart services and applications to help you manage your electricity use.' and a 'Green Button Download My Data' icon.

This is a close-up of the 'Account Management' navigation menu. It features a photo of an elderly couple and a list of menu items: 'Account Summary', 'Daily Electricity Usage', 'Manage Account Information', 'PPL Alerts', 'Privacy Release', 'Select Account', and 'Customer News and Notices'.

If your account has multiple meters, each meter will display on the exported spreadsheet. You can switch between accounts using the Select Account link on the left-hand side.

You can also download your information in green button format, using the same date selector, on the daily and hourly chart.

SEE YOUR ENERGY
USE LIKE NEVER BEFORE AT
PPELECTRIC.COM

Business
Services



PPL Electric Utilities is committed to safely and reliably delivering power to the businesses that fuel the local and regional economies of central and eastern Pennsylvania. Our continuing investment in a stronger, more secure grid and our dedication to customers position us to provide the best possible customer experience.